

Lady of the Flag

Nora Corbett - Mirabilia MD 62

Baby Blue Dress and Cherry-Red Flag Conversion

By: Kelley Shields (2025)

Stitched on Fabric Flair Constitution 32-ct Linen

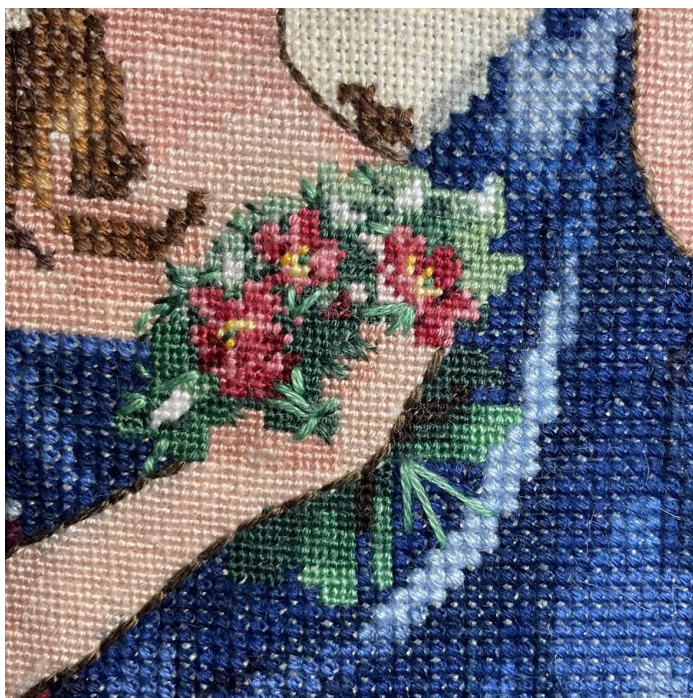
- Flag colors were changed and highlights added
- Dress colors changed to blues
- All beads changed to Miyuki Delica
- Skin colors changed, stitched 2-over-1
- Bouquet colors changed, stitched 2-over-1
- Bow and laurel leaves color change
- Torch color change and modified design
- DB in front of any number = Miyuki Delica Beads
- K in front of any number = Kreinik metallic
- A in front of any number = Anchor floss
- S in front of any number = Sulky 12 wt.
- C in front of any number = DMC Etoile

Note: If the table lines disappear on this document, it is a display issue [in the PDF]. Zooming in or out *may* solve the problem.

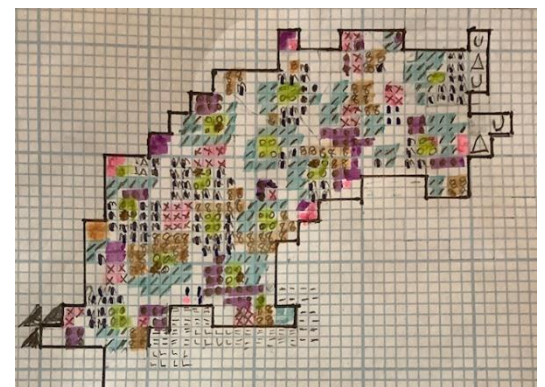


DRESS		
/	3755	Baby Blue 2x
7	A 978	Dk Baby Blue 2X
8	824	Vy Dk Blue 2X
□	A 149	UI Vy Dk Baby Blue
▲	A 150	Navy Blue
■	A 152	Dk Navy Blue
●	939	Vy Dk Navy Blue
DRESS SCARF Swirls		
X	DB 202	White Pearl AB
	DB 2391	Inside-dyed Moonstone (swirls in shadows)
BEAD TASSELS on outside of SCARF + FRINGE across bottom of dress		
○	DB 2386	Inside-dyed Night Sky
X	DB 1784	White-lined Sapphire
Bead tassels IN the dress skirt = Preciosa 4mm Rondelle Sapphire		
ZIGZAG PANEL on bottom of dress		
●	C 823	
◐	C 820	
❖	C 798	
X	DB 1882	Inside-dyed Bayberry
⊙	DB 2386	Inside-dyed Night Sky
○	DB 1811	Dusk Blue Silk Satin
CROSS-HATCH PANEL inside of DRESS		
X	DB 670	Crystal AB Silk Satin
⊙	DB 2386	Inside-dyed Night Sky
○	DB 1811	Dusk Blue Silk Satin
BS	K 033	#16 Braid

Converted FLAG Stripes			
U	3713	Vy Lt Salmon	These colors are listed light-to-dark. These were used to add highlights to the center of the "U" sections in the flag. ← 1006 is the main color of "U"
U	3727	Vy Lt Antique Mauve	
U	3833	Lt Raspberry	
U	3831	Dk Raspberry	
U	A 1006	Med Cherry Red	
E	A 43	Med Garnet	
★	A 44	Dk Garnet	
▲	A 72	Vy Dk Garnet	
*The gray/white stripes are unchanged from the original chart.			
Blue Ground w/ Stars			
b	A 136	Med Delft Blue	
A	A 1033-128	Lt Antique Blue -Vy Lt Baby Blue	
c	A 136-139	Med Delft-Royal Blue	
N	A 139	Royal Blue	
■	939	Vy Dk Navy Blue	
3	932	Lt Antique Blue	
>	A 128	Vy Lt Baby Blue	
STARS (Delica beads)			
o	DB 41		I used the white beads on the center fold but then used progressively darker gray beads for the outside folds [because they are in the shadows].
+	DB 1701		
⊙	DB 1901		
•	DB 52		



BOUQUET	
3831	742
3833	727
3713	A 209
A 1006	A 211
A 43	A 218
A 44	

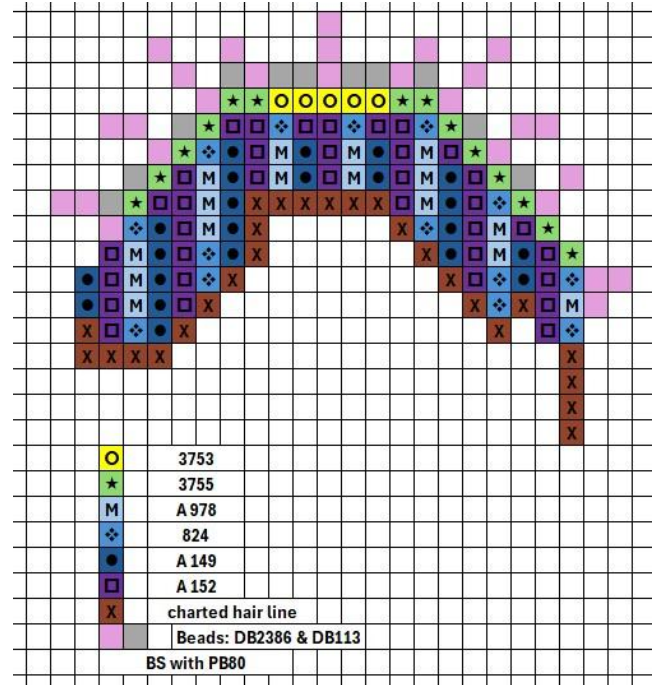


The footprint for the bouquet is the same as the original chart EXCEPT I draped a flower over the tip of her fingers to shorten her hand a bit. I added BS for fringe and stem detail.

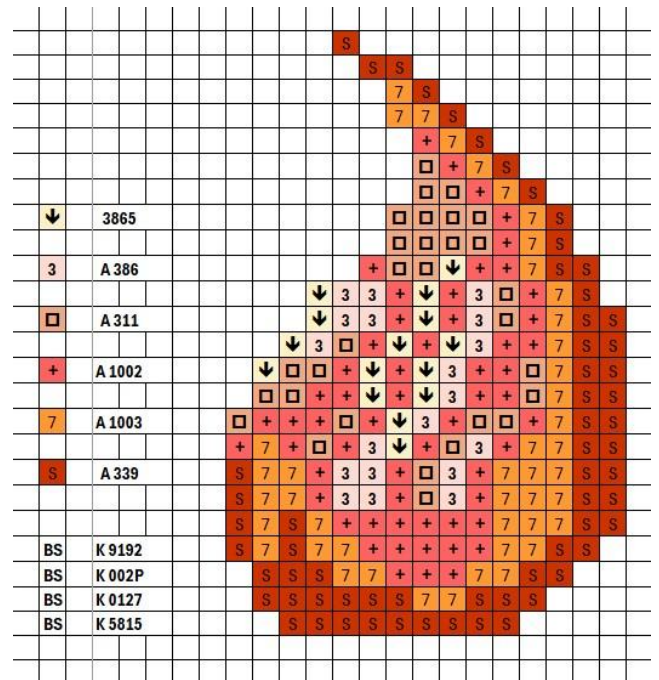
This is a visual for the (top) bouquet footprint.



Beads for Halo = DB 110 & DB 58



Beads for Halo = DB 2032 Luminous Sun Glow



LAUREL LEAVES		
▲	A 218	
△	A 217	
◆	66	Caron Waterlilies "Jade"
●	DD 206	Dinky Dyes "Mud Flats"
BS	S 712	Sulky "Mocha Brown"

BOW	
>	A 128
	3755
*	A 150
⚡	A 978
⋮	A 152