

While it is tempting to pick up a pattern, choose your fabric, buy the colors and start stitching. I highly recommend that you take a good look at your pattern and read the instructions before your start. It is worth your time to review the stitch count and consider the size of the project based upon the type of fabric that you are using. more.

Consider the type of thread that the pattern calls for and the type of thread that you want to use. Larger pieces require more thread. While this is obvious and does not make much of a difference in this pattern, there are some patterns that require 12-15 skeins of one color of floss, which can get quite pricey. More on this later. Bottom line: read the instructions. Many a stitcher has abandoned a project because they made an error in fabric size or amount of floss.



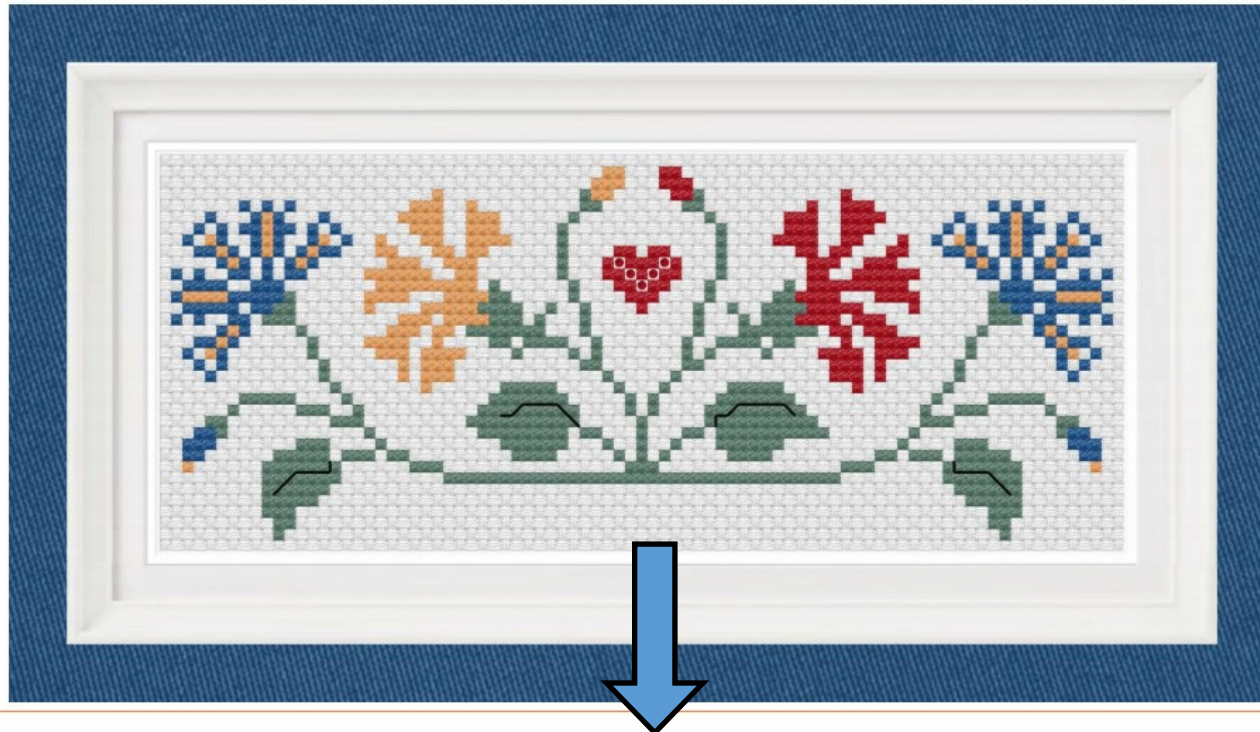
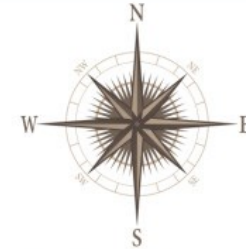
Title

Designer and copyright information. PDF patterns are not allowed to be shared with others as they can be reproduced too easily. Original paper copies of charts can be re-sold and/or gifted but not reproduced without permission from the designer.

Flowers

Pattern Designed by Kristi Bernstein

Copyright 2022—Kristi Bernstein—Salty Stitcher Designs



Some patterns come with a computer generated image of the cross stitch pattern. Prior to a model stitch, this is the best rendition of the pattern using the called for threads. Following completion of the original model, designers will send the model to be photographed. Depending on the quality of the photograph, the lighting, and the printing, the colors of the project can vary and appear different from the actual model. In most cases, the finished product looks a lot better than the photograph.

Stitch Count: 85 x 35—Length x width

This is not always the case. It is always good to look at the X and Y axis's of the chart to make sure you fabric is oriented in the correct way.

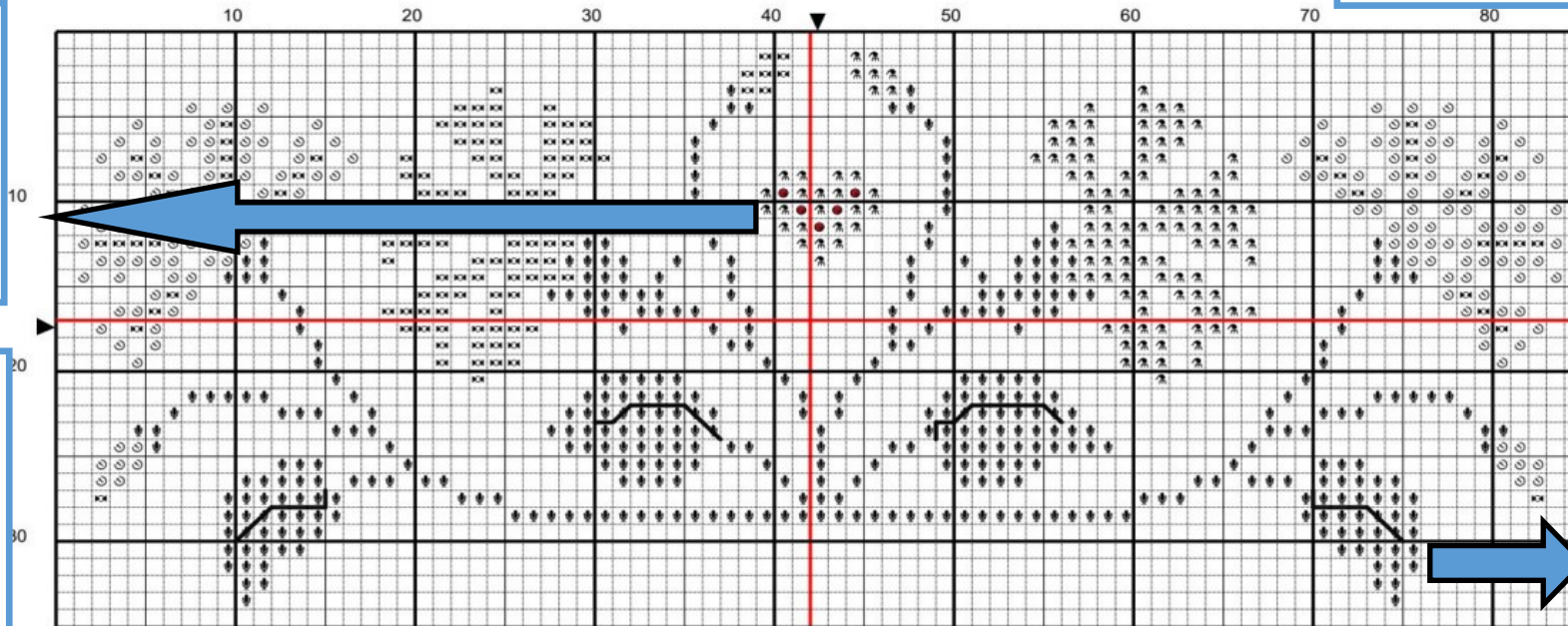
The finished size is calculated by dividing the stitch count by the size of the fabric.
Ex. 85 stitches divided by 14 count aid = 6.07 inches; 35 stitches divided by 14 count Aida = 2.5 inches. If you were using 16 count Aida, the size of the pattern would be: 5.3 x 2.1 inches.

14-Count the size of the fabric. The fabric in this case is Aida. 14 count denotes the number of holes in one inch of fabric. It can also be the number of full cross stitches per one inch.

Stitch Count: 85 x 35 : Finish Size: 6.1 inches x 2.5 inches on 14 count Aida

The red dots in this pattern refer to the addition of beads, French knots, or additional stitches. This is up to you.

Most patterns come with a key. There are some exceptions in kits where the color is painted on the fabric but most look like this. Always take a good look at the pattern and match your colors, key, and pattern. If you find a problem, most designers have the fix listed on their website.



Some patterns have backstitch to accentuate lines, highlight features, etc. In this pattern, backstitching is addressed in the instructions. That is not always the case. The number of threads used for backstitching depend on the amount of coverage you desire.

	Number	Name	Strands	Stitches	
	DMC 310	Black		2	b/s only
◆	DMC 502	Blue Green		2	404
▲	DMC 817	Coral Red very dark		2	130
⊙	DMC 825	Blue dark		2	164
✕	DMC 3827	Golden Brown pale		2	144

Instructions

Recommend stitching this pattern on 14-count aida with two threads of DMC thread or on 28-count linen with two threads DMC thread over two threads of linen. There are optional French knots or beads for the center of the heart. Use one strand of DMC 310 or other dark green color for backstitch within the leaves.